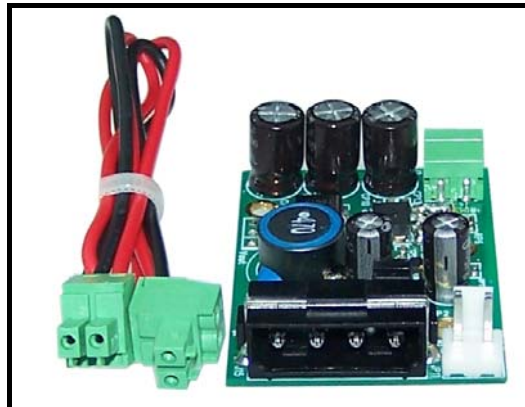


OpenVox

深圳开源通信有限公司

OpenVox-Best Cost Effective Asterisk Cards

OpenVox PFM100 User Manual



Written by: James. zhu

Email: james. zhu@openvox. cn, zhulizhong@gmail. com

Date: 21/05/2008

Version: 0. 01



深圳开源通信有限公司

OpenVox-Best Cost Effective Asterisk Cards

OpenVox Communication Co. Ltd.

Address: F/2, Building No. 14, Shangsha Science & Technology Park,
No. 9283, Binhe Road, Futian District, ShenZhen , Guangdong 518048, China

Tel: +86-755-82535095, 82535461, Fax: +86-755-82535174

E-Mail: sales@openvox.com.cn

IM for Technical Support: support@openvox.com.cn, zhulizhong@gmail.com, zhulizhongum@hotmail.com

Business Hours: 9:30AM-18:30PM from Monday-Friday

URL: www.openvox.com.cn

Thank You for Choosing OpenVox Products!

Table of Contents

Chapter 1	Overview.....	4
Chapter 2	Hardware Setting	4

Chapter 1 Overview

1. What is PFM

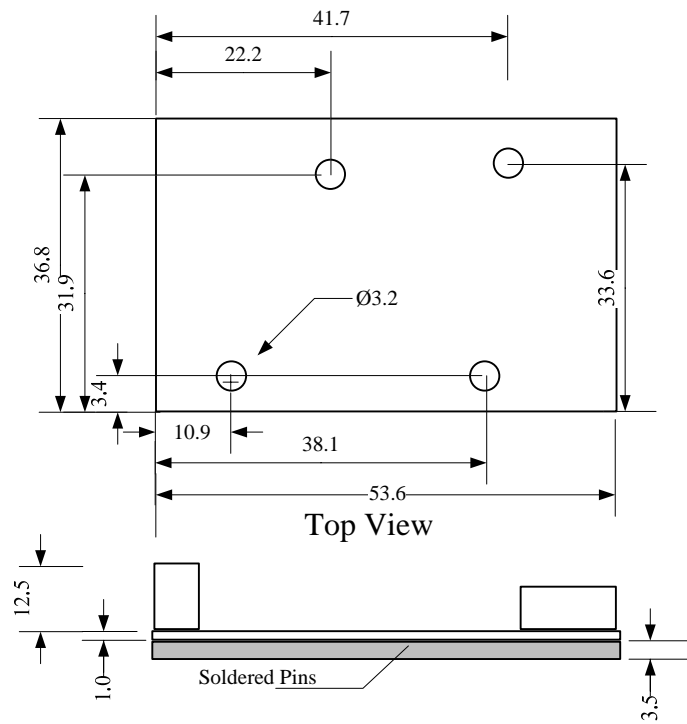
PFM100 is a power supply converter, which can be used for NT mode of B100M/B200M/B400M. Users should follow the steps:

- 1) Use the red-black 38V cable to connect to PFM100 and DC input on the B100MM/B200MM/B400MM.
- 2) Adjust the JP2, default is 12V, if you want to use 5 V, please adjust to 5V position. Check the details for input selection in jumper setting in chapter 2.
- 3) Plug in the Molex power supply into the 12V input. Usually, the PC power supply will provide the 12 V cable. It looks like this:

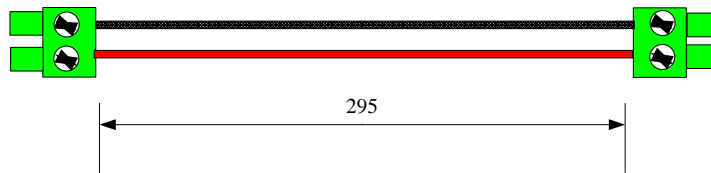


Chapter 2 Hardware Setting

PFM100 DIMENSIONS



To BX00M Board



To PFM100

Cable of 38V Output

ALL Measures In millimeters

PFM100 Jumper Setting

